

MADRAY STEEL, INC.

1012 Memorial Dr.

Avon Park, FL 33825

USA

Phone (863) 452-6344

Fax (863) 452-1176

E-mail madraysteel@earthlink.net

Web Site madraysteel.com

Investment Package

Model 1102-3-2-P



MADRAY STEEL, INC.

1012 Memorial Dr.
Avon Park, FL 33825
USA

Phone (863) 452-6344

Fax (863) 452-1176

E-mail madraysteel@earthlink.net

Web Site madraysteel.com

Model 1102-3-2-P

Itemized Shell KD Kit Information

Structural Steel Frame:

Steel Frame Kit includes screws (anchors not included)
3 sets of Sealed Plans & Engineering (Florida Engineer)

Interior Partition Walls:

25 Ga. Interior Framing (T=26-10'4-12', Cee=80-8' & 3-10')
#8 x 1/2" Wafer Head Screws (1,000 pcs.)

Metal Roofing:

26 Gauge R-Panel Mill Finish (1,400 sq. Ft.)
10' Ridge Cap (4pcs.)
Foam Enclosures (26 pcs.)
Tacky Tape (11 rolls)
3/8" x 3/16" Weather Stripping

Exterior Finish:

4' x 8' Stucco Finish Hardie Board (51 sheets)
6 x 1 1/4" Tec Screws (5000 ea.)
Alex Plus 30 yr. Caulk (15 tubes)

Exterior Doors:

6 Panel Exterior Steel Doors w/hardware (2)

Windows:

Silverline Single Hung Windows-See Chart on Plans (8)

Fascia & Soffit:

1 x 6 Pressure Treated Boards
6" Aluminum Fascia
FHA Galvanize Drip Edge
Aluminum Soffit & J-Channel
Screws

Electrical:

3/4" Plastic Electrical Grommets (333 pcs.)

Designed for 120mph wind speed. Higher wind loads can be obtained.

MADRAY STEEL, INC.

1012 Memorial Dr.
Avon Park, FL 33825
USA

Phone (863) 452-6344

Fax (863) 452-1176

E-mail madraysteel@earthlink.net

Web Site madraysteel.com

Model 1102-3-2-P

Itemized Shell KD Kit Information

Structural Steel Frame:

\$ 7,603.00

Steel Frame Kit includes screws (anchors not included)
3 sets of Sealed Plans & Engineering (Florida Engineer)

Interior Partition Walls:

25 Ga. Interior Framing (T=26-10'¼-12', Cee=80-8' & 3-10')
#8 x ½" Wafer Head Screws (1,000 pcs.)

Metal Roofing:

26 Gauge R-Panel Mill Finish (1,400 sq. Ft.)
10' Ridge Cap (4pcs.)
Foam Enclosures (26 pcs.)
Tacky Tape (11 rolls)
3/8" x 3/16" Weather Stripping

Exterior Finish:

4' x 8' Stucco Finish Hardie Board (51 sheets)
6 x 1 ¼" Tec Screws (5000 ea.)
Alex Plus 30 yr. Caulk (15 tubes)

Exterior Doors:

6 Panel Exterior Steel Doors w/hardware (2)

Windows:

Silverline Single Hung Windows-See Chart on Plans (8)

Fascia & Soffit:

1 x 6 Pressure Treated Boards
6" Aluminum Fascia
FHA Galvanize Drip Edge
Aluminum Soffit & J-Channel
Screws

Electrical:

¾" Plastic Electrical Grommets (333 pcs.)

Total (Price as of July 1, 2009-subject to change)

\$ 15,135.00

Designed for 120mph wind speed. Higher wind loads can be obtained.

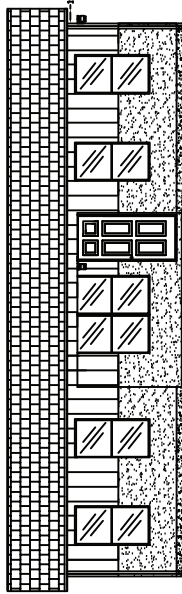
Sales Tax included in price. Terms: 75% upon order, 25% on or before due date.

3/12 Roof Pitch and Absolutely No Plan Modifications. All Prices are F.O.B. Avon Park, Florida

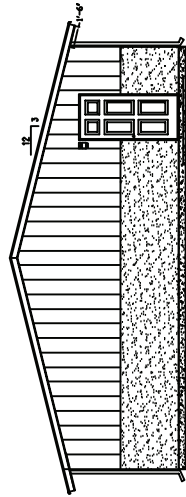
Transportation and Labor is provided by customer unless noted.

Additional Labor Charge will apply for loading into container(s).

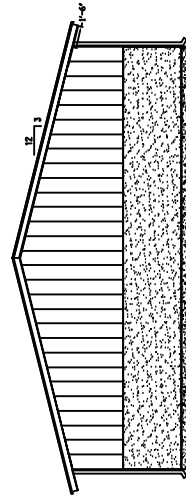
DESIGNED FOR 120 MPH



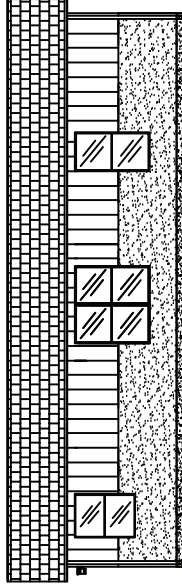
FRONT ELEVATION



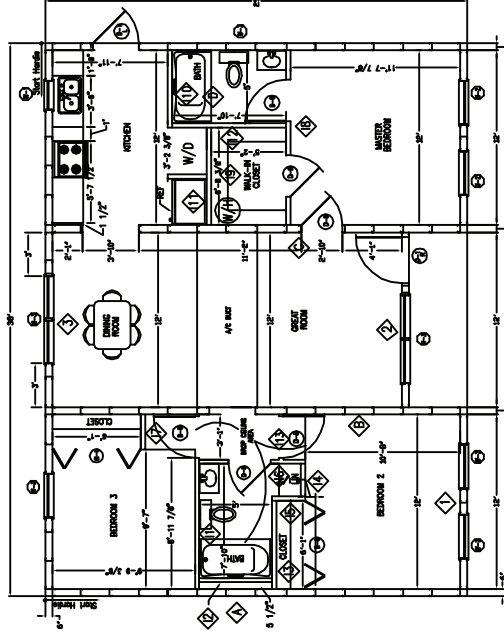
RIGHT ELEVATION



LEFT ELEVATION



BACK ELEVATION



FLOOR PLAN

MODEL-H-1102-3-2-P
1102 SBLT.

NO.	DATE	DESCRIPTION
1	03/28/2009	W/ INTERIOR WALLS
2		

WINDOW SCHEDULE
1102-2000S

NO.	TYPE	FINISH	GLASS	OPERATION	SWITCH
1	36"	609	609	609	609
2	36"	609	609	609	609
3	36"	609	609	609	609
4	36"	609	609	609	609
5	36"	609	609	609	609
6	36"	609	609	609	609

DOOR SCHEDULE
1102-2100S

NO.	TYPE	FINISH	GLASS	OPERATION	SWITCH
1	36"	609	609	609	609
2	36"	609	609	609	609
3	36"	609	609	609	609
4	36"	609	609	609	609
5	36"	609	609	609	609
6	36"	609	609	609	609

APPROVED BY: _____

SCALE: 1/4" = 1'-0" USE SCALE WHEN DRAWING SIZE CHANGES

1 2 3 4 5 6 7 8 9 10 11 12 13 14 15 16

DATE: 03/28/2009

REV. 2

REVISION DESCRIPTION: W/ INTERIOR WALLS

DESCRIPTION: H-1102/3/2/P

DRAWING: _____

CAD FILE: _____

MODEL: MADRAY STEEL INC.

1012 MEMORIAL DRIVE

AVON PARK, FL 33825

DRAWN BY: VD

DATE: 03/28/2009

REV. 2

REVISION DESCRIPTION: W/ INTERIOR WALLS

APPROVED BY: _____

MADRAY STEEL

SHEET: 1

OF: 4

Demidovich Engineering, Inc
 Joe Demidovich, P.E.
 Florida #23356
 Lakeland, FL 33813
 863-646-0247